



There is a difference

2023
COLLECTION

Bihr
Powering your passion

Since 1937, Arai is a family company, driven by the same family, with the same mission, through three generations of riders : build the best possible helmet. Every Arai helmet is inspected by different quality inspectors to ensure that the customer gets a perfect finished product. In every Arai shell you will find the signature of the craftsman who made it. You may never see it, but it is here! Their mission were always been the protection and comfort of riders, that's all!

Summary

	HOMOLOGATION ECE-2206	1
FULL FACE	RX-7V RC	3
	RX-7V EVO RACING	5
	RX-7V EVO	6
	QUANTIC	16
	CONCEPT-XE	26
	TOUR-X4	32
OPEN FACE	SZ-R VAS	40
OFF ROAD	MX-V	48
SPARE PARTS		54
PINLOCK		64
INTERCOM SENA		66



@Javi Echevarria

Homologation ECE-2206



Since 2003, the ECE-2205 norm was the motorcycle helmet homologation approval in Europe. After 18 years of validity, it has become obvious that this norm would need an upgrade to fit to the new helmets standards. Indeed, since 2003, the motorcycle helmets have been improved significantly with quick releases, multi-density EPS and so on. On the other hand, some innovations have appeared to be used as sales features such as integrated sun visor or modular helmets for example.

At ARAI, we have always been focused on the most important feature of an helmet: the rider protection. We have always think an homologation is a minimum what a helmet should do and we are always looking for improvements, real world accidents. This is the reason why we have constantly been looking at improving year after year the safety performance of our helmets.

In 2021, the ECE-2205 homologation will "evolve" to ECE-2206 in order to meet new standards and increase the rider's protection. We have been looking for these improvements for 3 generations, and that's how we managed to have the world first helmet passing this norm already in mid-2021. Already 18 years ago, ARAI was the first helmet manufacturer to have an ECE-2205 & SNELL approved helmet (RX-7GP). This shows once again that ARAI's obsession has always been to protect the riders.

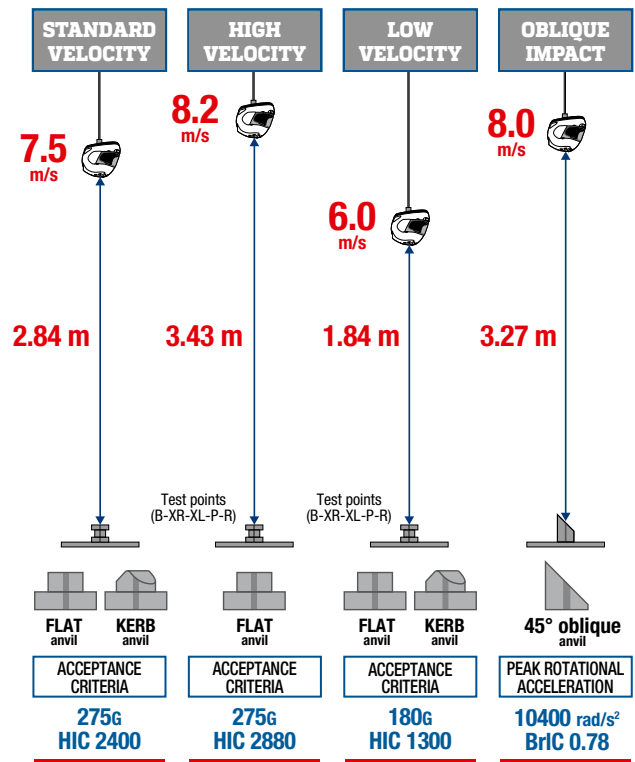
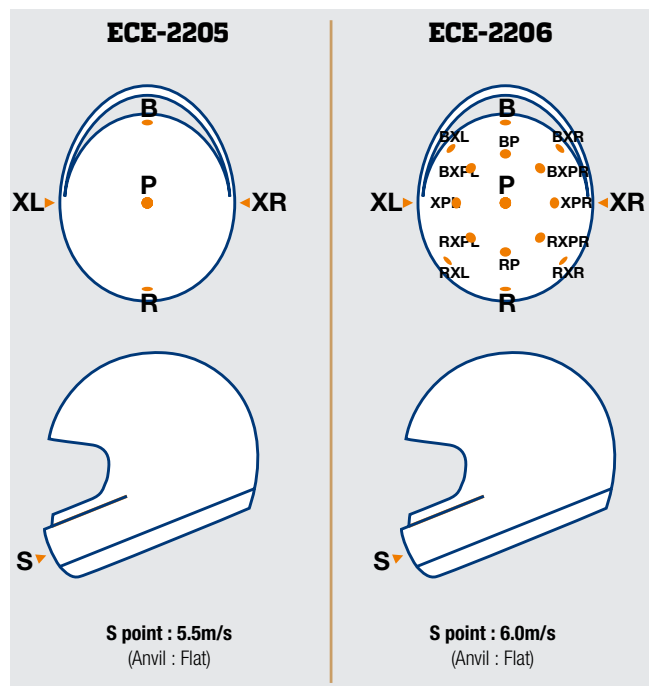


What is going to change?

This ECE-2206 is a more stringent approval, testing helmets with additional crash-test, new impact points, more diversity of speed and impact surface.

- **New impact points:** Addition of 12 impact points, which will increase the overall helmet testing and prevent helmet manufacturers to build helmet focused on very few impact point. We know at ARAI that crashed are unpredictable.
- **Additions of speed testing:** Addition of high and low velocity tests. Kinetic energy goes up in proportion to the speed, which means that the ECE-2206 is more depending on the impact dispersion. On the other hand, the low speed impact is important for the EPS liner, to absorb when the outer shell has not much opportunity to crack and divide the energy, the EPS liner has to absorb most of it.

- **Addition of an Oblique Impact test:** This test is the first one that is considering what we always have been truly believed in the most important feature of an helmet performance, we refer to "Glancing Off". As soon as the helmet hits the anvil, the direction is changed from vertical to horizontal. By having a rounder and smoother shell, the helmet will bounce off, this is one of the reasons why ARAI has been the first one to pass this new regulation, we have always been focused on rider safety.



When will that change?

Due to the pandemic, the activation of that new homologation became a real challenge for several helmet manufacturers. But there is no official announcement on the change of the initial plan which is:

- From **July 2022** it is no longer possible to approve or extend according to the ECE-2205 series.
- From **July 2023** it is no longer allowed to use the approval numbers from the ECE-2205 series.
- From **January 2024** it is prohibited to sell ECE-2205 series products by contracting parties.

Sooner or later, all the rider gear industry will have to adapt to this new standard. ARAI is once again demonstrating its capacity of manufacturing the best helmets in the world by having homologated the first ECE-2206 approved helmet in 2021, available on the market 6 month ahead of any other brand. By 2022, ARAI will be able to provide 2 models homologated with the plan to have the full range ECE-2206 by 2024.





**RX-7V EVO
RACING**



OUR UNIQUE | **OBSESSION** | WITH PROTECTION



THE CONSISTENT PURSUIT OF GAINS IN PROTECTION

■ Full Face helmets



ARAI RX-7V RC - Carbon



	XS	S	M	L	XL
RX-7V RC Carbon	8004730001	8004730002	8004730003	8004730004	8004730005

3.499,95€

The RX-7RC represents the summit of Arai's knowledge, experience and know-how in helmet technology.

- RC Carbon Fiber 11 layers reinforced shell
- Pinlock insert lens included
- FCS Facial Contour System : perfect fit for every kind of face
- New ducts and improved integrated Air Channels
- "Glancing Off" concept : increases the ability of glancing off objects, without transmitting shock energy to the rider.
- Air Wing® : Special wing for better high speed stability, and reduce air noises.

- Emergency Release System
- Meets SNELL M2010/2015 - European ECE 22.05 standards
- 5-year limited warranty

RX-7 RC has widely outperforming all Snell Standard tests: Main Arai goal is making more safety helmets in the world

Size chart

XS	53-54 cm
S	55-56 cm
M	57-58 cm
L	59 cm
XL	60-61 cm



RX-7V RC

Bihr



Full Face helmets



RX-7V EVO RACING



	XS	S	M	L	XL	2XL	3XL	
RX-7V EVO FIM White	8007860001	8007860002	8007860003	8007860004	8007860005	8007860006	8007860007	1.029,95€

ARAI presents the best helmet made for competition.

The new RX-7V RACING is going a step forward thanks to a new technologic feature: the Aerodynamic assist.

This new aerodynamic spoiler homologated FIM facilitates the air flow from the back of the helmet and the racing suit bump:

- Improvement of the Air Flow
- Faster is the speed, more the air-effect is perceived
- New design for the rear ventilation



- FIM homologation: ARAI is one of the only brand able to provide the FIM homologated helmet to any riders.
- This homologation is not fundamentally changing the helmet from a RX-7V standard. One of the few difference is the friction ratio between the two shells to allow a better head rotation within the helmet.
- The size range is from the XS to L, (the exact same sizes as the regular RX-7V)

ARAI awarded from the FIM gold medal

ARAI is the first brand that has been awarded from the FIM as a security manufacturer for the riders. This medal has been given to Michio ARAI for his "achievement in contributions to the safety of many riders and numerous advancements to motorcycle sports over many years"

Other features :



2D visor with tear-off post



Antimicrobial liner material



Emergency Release System (ERS)

Size chart

XS	53-54 cm
S	55-56 cm
M	57-58 cm
L	59 cm

■ Full Face helmets

HOMOLOGATED
ECE 22-06

RX-7V EVO



Full Face helmets

Outer shell : PB SNC²

Super Fibre and other special synthetic fibres, with superb tensile strength and flexibility characteristics, developed for F-1 helmet, are assembled and bonded by Arai experts, to create stronger and lighter shell.



Diffuser Type 12

20mm longer, compared to the previous model, their efficiency is increased by 19%. New Air Wing to improve stability. Adjustable : 3 positions; closed, half open and open but also help to improve sealing that decreases wind noise and water intrusion.



Eco Pure Liner

The fully removable interior liner system has been improved with new Eco Pure antibacterial material, which helps maintain neutral acidity levels close to human skin. Softer and deeper new liner for great comfort. Adjustable temple padding that allows to customize fit.



VAS V MV Shield

VAS MAX Vision shield, very shock resistant, is provided in clear version for better visibility in all seasons. Comes standard with Clear anti-fog Pinlock insert to be installed as needed.



Stronger shell advanced by the latest technologies

From extreme ventilation to unmatched comfort, among numerous other advances you expect in our RX-7V model.

IC Duct5

The new IC Duct5 provides 11% more airflow than the previous Delta Duct5. The new bigger switch makes opening and closing easier. The new IC duct-5 has three positions; closed, half open and fully open to adjust the airflow and prevent water intrusion when fully closed.



Chin Cover

The curtain simultaneously blocks air intrusion from turbulent air below and increases negative pressure to enhance the inner air extraction and reduce noise.



Air channel

Enhanced air exhaust from the eye port area, pulled through dedicated air channel to side cowl-6, improving efficiency and reducing noise.



Full Support Interior

FCS Cheek pad with ear pocket recess for speakers and 5mm peel away layer for added room if needed. Larger space in mouth area for a more open feeling. New emergency release tab positioned at the end of the release strap for easier access by rescue staff. Improved comfort performance with better fitting while being easier to put on and off.



RX-7V EVO



©Lionel Baylot - Thibaut Angues

We are pleased to introduce the RX-7V EVO, the second model in our collection to be ECE R22-06 certified. The RX-7V EVO is an evolution of the current RX-7V.

RX-7V EVO

Arai is always ahead of the game by building helmets made to go further than what is required by helmet safety standards. Arai is therefore capable to quickly adapt to any changes in regulations without having to compromise on the level of protection. This means that the RX-7V EVO will be certified to the new and more stringent ECE R22-06 regulation, while staying true to the core values of Arai of Rounder, Smoother and Stronger for optimal Glancing Off performance.

Why EVO?

Because of the transition to ECE R22-06, the new RX-7V EVO will not be SNELL certified which means we had to slightly alter the model name. We've decided on RX-7V EVO to signify the transition to ECE R22-06 and to comply with SNELL regulations stipulating that the same model name cannot be used for both SNELL and any other homologation (it has to be different by at least three characters).

Features & Changes

The RX-7V EVO is an evolution of the RX-7V. Besides the change of homologation, it has several features and changes:

- Different style cheek pads with hook at the back (similar to Quantic & Profile-V)
- The side air channels have been moved to the back of the cheek pad
- Outer shell size of XL is one size larger (86 -> 88)

The RX-7V EVO represents the summit of Arai's knowledge, experience and know-how in helmet technology. With a PB-SNC² outer shell, the revolutionary VAS ("Variable Axis System") visor system and a significant increased smoother area around the temples, the RX-7V EVO offers the new benchmark in the premium helmet segment.

From the anti-microbial material liner with an even slimmer frame, to the ducts, improved diffuser and the integrated Air Channels, every part shows the attention to detail that is so typical for Arai. Arai has continually improved the "glancing off" performance by learning from real scenarios.

Thanks to the stronger and smoother shell and VAS, the RX-7V EVO is closer to the ideal helmet shape than ever. With VAS, the visor mounting position is lowered 24mm in pursuit of the ideal smoother shape that increases the ability of glancing off energy. As a result, this has made it possible for the shell to be completely smooth above the test line of the Snell standard.

- PB SNC² Shell: Super Fibre and other special synthetic fibres, with superb tensile strength and flexibility characteristics, developed by ARAI.
- Diffuser Type 12: New Type 12 diffusers are 20mm longer and straightened for improved aerodynamics, working together with the Air Wing to improve stability. Compared to the previous Type 10 diffusers, the efficiency of the intake scoops of the new Type 12 diffusers has increased by 19%. The new air intake vents not only have more adjustability with three positions; closed, half open and fully open but also help to improve sealing that decreases wind noise and water intrusion.
- Eco Pure Liner: The fully removable interior liner system has been improved with new Eco Pure material, which helps maintain neutral acidity levels close to human skin and antibacterial consumption.
- VAS V MV Shield: VAS MAX Vision shield is standard to provide better visibility in all seasons and for all types of riding. Comes standard with Clear anti-fog Pinlock insert to be installed as needed.
- Washable interior
- Double-D ring device
- 5-year limited warranty

Size chart

XS	53-54 cm
S	55-56 cm
M	57-58 cm
L	59 cm
XL	60-61 cm

Full Face helmets



RX-7V EVO



**NEW
2023**

**HOMOLOGATED
ECE 22-06**

	XS	S	M	L	XL
RX-7V EVO SAMURAI	8007834001	8007834002	8007834003	8007834004	8007834005

1.099,95€



**NEW
2023**

**HOMOLOGATED
ECE 22-06**

**Limited
Edition**

	XS	S	M	L	XL
RX-7V EVO MWC	8007835001	8007835002	8007835003	8007835004	8007835005

1.099,95€



**NEW
2023**

**HOMOLOGATED
ECE 22-06**

	XS	S	M	L	XL
RX-7V EVO MAVERICK STARS	8007786001	8007786002	8007786003	8007786004	8007786005

1.099,95€

Full Face helmets



RX-7V EVO



**NEW
2023**



XS S M L XL

RX-7V EVO JR 65 Red 8007836001 8007836002 8007836003 8007836004 8007836005

1.099,95€



**NEW
2023**



XS S M L XL

RX-7V EVO JR 65 Green 8007836006 8007836007 8007836008 8007836009 8007836010

1.099,95€



XS S M L XL

RX-7V EVO RUSH Red 8007049001 8007049002 8007049003 8007049004 8007049005

1.099,95€

Full Face helmets



RX-7V EVO



**NEW
2023**

**HOMOLOGATED
ECE 22-06**

	XS	S	M	L	XL
RX-7V EVO RUSH Blue	8007049006	8007049007	8007049008	8007049009	8007049010

1.099,95€



**HOMOLOGATED
ECE 22-06**

	XS	S	M	L	XL
RX-7V EVO STEP Red	8007048001	8007048002	8007048003	8007048004	8007048005

1.099,95€



**HOMOLOGATED
ECE 22-06**

	XS	S	M	L	XL
RX-7V EVO SCHWANTZ DESIGN White / Blue / Red	8006694001	8006694002	8006694003	8006694004	8006694005

1.099,95€

Full Face helmets



RX-7V EVO



XS S M L XL

RX-7V EVO PEDROSA SPIRIT GOLD
Black / Gold

8006689006 8006689007 8006689008 8006689009 8006689010

1.099,95€



XS S M L XL

RX-7V EVO HAYDEN RESET
Black / White / Red

8007051001 8007051002 8007051003 8007051004 8007051005

1.099,95€



XS S M L XL

RX-7V EVO HAGA GP
Red / Silver / Black

8007050001 8007050002 8007050003 8007050004 8007050005

1.099,95€

Full Face helmets



RX-7V EVO



	XS	S	M	L	XL
RX-7V EVO NAKAGAMI GP2	8006686001	8006686002	8006686003	8006686004	8006686005

1.099,95€



	XS	S	M	L	XL
RX-7V EVO KIYONARI TRICO	8007837001	8007837002	8007837003	8007837004	8007837005

1.099,95€



	XS	S	M	L	XL
RX-7V EVO TATSUKI	8006687001	8006687002	8006687003	8006687004	8006687005

1.099,95€

Full Face helmets



RX-7V EVO



	XS	S	M	L	XL	2XL	3XL
RX-7V EVO Diamond White	8006684001	8006684002	8006684003	8006684004	8006684005	8006684006	8006684007

949,95€



	XS	S	M	L	XL	2XL	3XL
RX-7V EVO Diamond Black	8006684008	8006684009	8006684010	8006684011	8006684012	8006684013	8006684014

949,95€



	XS	S	M	L	XL	2XL	3XL
RX-7V EVO Frost Black	8006685001	8006685002	8006685003	8006685004	8006685005	8006685006	8006685007

949,95€



■ Full Face helmets

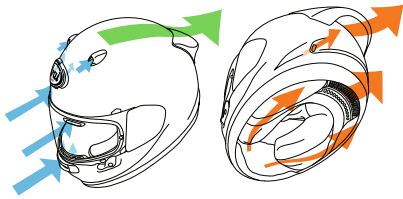


QUANTIC



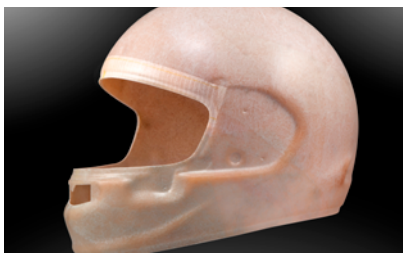
©Lionel Baylot - Thibaut Nogues

Full Face helmets



Ventilation

Comprehensive and controllable ventilation is based around 12 ventilation ports: 6 intake, 6 exhaust. The 3D Arai logo feeds cooling air into two central intake points and works well at low speed, alongside dual F1-derived tear duct top intakes, twin brow vents and 2-position sliding air-scoop, filtered chin vent. Hot air is efficiently extracted via the 3-way one-piece rear exhaust/ spoiler, twin flush-fit side exhausts (with foam dams to reduce noise) and neck exhaust.



PB e-cLc Outer Shell

PB e-cLc (Peripherally Belted e-Complex Laminate Construction).

The PB e-cLc outer shell design outlines a stylish, organic shape and uses a Peripherally Belted e-Complex Laminate Construction for lightweight strength; it's designed to glance off and spread impact forces.

New materials have been used to substitute the AR-mat as middle layer, resulting in a substantial weight reduction while maintaining the same strength as the PB-cLc construction.



3D Arai logo duct

Immediately noticeable, the new 3D Arai logo duct (just 3.5mm in depth) feeds two central 10mm intake ports.

This is a first in an Arai, and entirely due to PB e-cLc's strength and the shell construction.

It also works very well at low speed and with an upright riding position; at just 50km/h it's channelling an extra 40% airflow, at 120km/h 7%.

If the rider can't see the lever and the logo is in its normal place, the duct is open. The Arai logo duct is designed to breakaway in the event of an impact.



Replaceable interior

The complete interior may be easily removed. All parts (replaceable or not) can be cleaned with lukewarm water and mild soap. Rinse well after cleaning and never dry in direct sunlight or near a heat source. Interior parts in different size thickness are available for a custom fit for every rider.



Rear exhaust/spoiler

The one-piece rear exhaust/spoiler, operated by a 3-way switch, is inspired by the DX-2 of the RX-7V Racing, but redesigned for touring use – however, it was tested up to 300km/h at Suzuka. It is fed by 3 ports in the shell. As part of the Quantic's comprehensive ventilation system it efficiently draws air but also smooths airflow over (and from the side) of the helmet, improving stability and reducing buffeting. The result is much less rider fatigue. It's designed to crush or break away upon impact, therefore having no impact on protective performance.



Air-scoop chin vent

Also new is the 3-position (open, midway and closed) sliding air-scoop chin vent which flows a larger intake volume of air and has a replaceable filter. The actuating mechanism is thicker and easy to use with gloves.

QUANTIC



©Lionel Baylot

The new Arai Quantic – as the mathematical definition describes – draws together in harmony the qualities and design elements found in helmets throughout the Arai range, while adding fresh features all of its own.

The Quantic offers a new choice for riders that want the very best helmet – in terms of protection, performance, comfort and ease of wear – without compromise. Using the aerodynamic and protective abilities of Arai’s full-race helmets, and all the experience and know-how earned over millions of road kilometers, the Quantic joins race and road specification together in sleek, beautiful form.

- Aimed at the sports-touring rider who wants dynamic, race-derived performance
- With luxurious comfort and features suitable for long riding days
- e-Complex Laminate Construction (e-cLc) outer shell with VAS
- Glancing Off concept: increases the ability of glancing off objects, without transmitting shock energy to the rider
- New 3D Arai Ventilation logo
- New Dual 'tear duct' top intake vents
- Two-position sliding chin vent
- One-piece rear exhaust/spoiler
- New Dedicated shell area to accommodate communication device
- ECE R22-06 approved

Size chart

XS	53-54 cm
S	55-56 cm
M	57-58 cm
L	59-60 cm
XL	61-62 cm

Full Face helmets



QUANTIC



**NEW
2023**

**HOMOLOGATED
ECE 22-06**

	XS	S	M	L	XL
QUANTIC ROBOTIK Blue / Black	8007838001	8007838002	8007838003	8007838004	8007838005

799,95€



**NEW
2023**

**HOMOLOGATED
ECE 22-06**

	XS	S	M	L	XL
QUANTIC ROBOTIK Red / Black	8007838006	8007838007	8007838008	8007838009	8007838010

799,95€



**NEW
2023**

**HOMOLOGATED
ECE 22-06**

	XS	S	M	L	XL
QUANTIC ROBOTIK Black / Grey	8007838011	8007838012	8007838013	8007838014	8007838015

799,95€

Full Face helmets



QUANTIC



**NEW
2023**



XS S M L XL

QUANTIC SPACE
Blue / Black / Red

8007839001 8007839002 8007839003 8007839004 8007839005

799,95€



**NEW
2023**



XS S M L XL

QUANTIC SPACE
Red / Black / White

8007839006 8007839007 8007839008 8007839009 8007839010

799,95€



**NEW
2023**



XS S M L XL

QUANTIC DARK CITIZEN
Black / Gold

8007840001 8007840002 8007840003 8007840004 8007840005

799,95€

Full Face helmets



QUANTIC



**NEW
2023**

**HOMOLOGATED
ECE 22-06**

	XS	S	M	L	XL
QUANTIC PODIUM White / Blue / Red / Black	8007841001	8007841002	8007841003	8007841004	8007841005

799,95€



**HOMOLOGATED
ECE 22-06**

	XS	S	M	L	XL
QUANTIC FACE Neon Yellow / Black	8000435001	8000435012	8000435018	8000435019	8000435020

799,95€



**HOMOLOGATED
ECE 22-06**

	XS	S	M	L	XL
QUANTIC FACE Grey / Black	8000435022	8000435023	8000435024	8000435002	8000435003

799,95€

Full Face helmets



QUANTIC



	XS	S	M	L	XL
QUANTIC FACE Red / White	8000435005	8000435006	8000435007	8000435008	8000435009

799,95€



	XS	S	M	L	XL
QUANTIC FACE Blue / Black	8000435011	8000435013	8000435014	8000435015	8000435016

799,95€



	XS	S	M	L	XL
QUANTIC SNAKE Black / Red / White	8000436001	8000436005	8000436006	8000436007	8000436008

799,95€

Full Face helmets



QUANTIC



	XS	S	M	L	XL
QUANTIC SNAKE Black / Grey / White	8000436010	8000436011	8000436012	8000436002	8000436003

799,95€



	XS	S	M	L	XL
QUANTIC RAY White / Blue / Red / Black	8007052001	8007052002	8007052003	8007052004	8007052005

799,95€



	XS	S	M	L	XL
QUANTIC RAY Black / Red / White	8007052007	8007052008	8007052009	8007052010	8007052011

799,95€

Full Face helmets



QUANTIC



XS S M L XL

QUANTIC Diamond White 8000432001 8000432005 8000432006 8000432007 8000432008

679,95€



XS S M L XL

QUANTIC Diamond Black 8000432010 8000432011 8000432012 8000432002 8000432003

679,95€



XS S M L XL

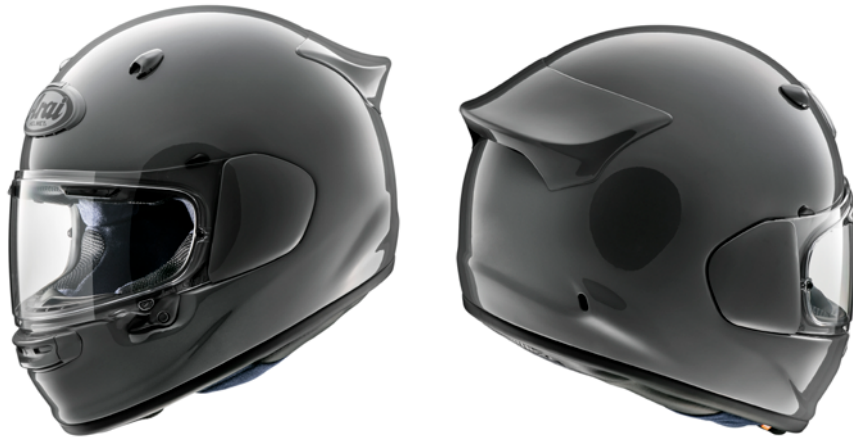
QUANTIC Frost Black 8000433001 8000433002 8000433003 8000433004 8000433005

679,95€

Full Face helmets



QUANTIC



	XS	S	M	L	XL
QUANTIC Modern Grey	8000434001	8000434002	8000434003	8000434004	8000434005

679,95€

© Lionel Baylot



■ Full Face helmets

CONCEPT-XE



©Lionel Baylot

Full Face helmets

Speaker pocket

Build in communication systems are popular, but the problem is often that the room for a speaker is limited or just not present, causing unpleasant pressure points. The Renegade V is equipped with special speaker pockets, offering room for mounting speakers without effecting comfort or fit. (Speaker not included).



Variable Axis System (VAS)

With VAS, the visor mounting position is lowered, yielding an average of an additional 24mm across both temple areas, in pursuit of the ideal smoother shape that increases the ability of glancing off energy.

Outer shell : PB e-cLc

The Concept-X's outer shell uses a Peripherally Belted e-Complex Laminate Construction (PB e-cLc) for lightweight strength; it's designed to glance off and spread impact forces. New materials have been used to substitute the AR-mat as middle layer, resulting in a substantial weight reduction while maintaining the same strength as the PB-cLc construction.



Peel Away pads

5mm thick removable foam layer on the ear cups/cheek pads and temple pads. Offering more room if desired without the need to purchase an optional headliner or new pads/ear cups.



Antimicrobial Liner

The fully removable anti-microbial interior liner system has been improved, helps maintain neutral acidity levels close to human skin. Softer, deeper and more comfortable fit the new liner also has adjustable temple padding that allows for a customized fit.



Facial Contour System

To offer an even better snug fit and enhancing the comfort to the lower jaw, the Facial Contour System (FCS) works with a foam spring support in the cheek pad that compresses and rebounds

New Ventilation System

The Concept-X features an exclusive ventilation system that is unique to this model. It is instantly recognizable by the large intake duct (reclosable) on the front part of the helmet. The large inlet allows generous amounts of cool, fresh air to enter the helmet, assisted by the large single frame rear duct. The exhaust function of the large front duct keeps working when the intake is closed. The two small exhaust vents on the back of the helmet help to quickly dispose hot, warm air from the helmets interior.

CONCEPT-XE



©Lionel Baylot

A cutting-edge technology with a vintage look !

While a homage to the classic style of the 1908s, the Concept-XE is equipped with all the latest protection and comfort. A simple and sophisticated form that is not categorized by any genre. In addition to Arai's first inner ventilation system, it features a full system interior which has almost the same materials as racing models. A "Neo Classic" helmet that is not only for classic bikes and cruisers but also compatible with the latest motorcycles.

- PB-e cLc outer shell, constructed of Arai's original super fiber and a newly developed resin
- New Arai system : three exhaust holes are provided on top so that air passes through the air channel in the liner and is exhausted efficiently through the slit at the back of the head by negative pressure caused when riding. The highly efficient ventilation is realized while maintaining a simple and clean surface
- VAS system : compact visor with Variable Axis System, better protection in the temple areas, without compromise on visual field
- FCS Facial Contour System : perfect fit for every kind of face
- Anti-bacteria, anti-fouling and deodorant properties Ecopure interior. Fully removable and washable
- "Peel away" 5mm thick removable foam layer. Offering more space if desired without the need to purchase an optional part
- Hand crafted
- The Concept-XE has widely outperforming all standard tests: Main Arai goal is making the safest helmets in the world
- Suitable with PSS (Pro Shade System) visor : the all-weather solution against afogging, misting and sun-glare - Available separately
- ECE R22-06 approved

Size chart

XS	53-54 cm
S	55-56 cm
M	57-58 cm
L	59-60 cm
XL	61-62 cm
XXL	63-64 cm

Full Face helmets



CONCEPT-XE



**NEW
2023**

**HOMOLOGATED
ECE 22-06**

	XS	S	M	L	XL
CONCEPT-XE REACT 1 Brown	8007829001	8007829002	8007829003	8007829004	8007829005

749,95€



**NEW
2023**

**HOMOLOGATED
ECE 22-06**

	XS	S	M	L	XL
CONCEPT-XE REACT 2 Blue	8007829007	8007829008	8007829009	8007829010	8007829011

749,95€



**NEW
2023**

**HOMOLOGATED
ECE 22-06**

	XS	S	M	L	XL
CONCEPT-XE OVERLAND Olive Khaki	8007830001	8007830002	8007830003	8007830004	8007830005

749,95€

Full Face helmets



CONCEPT-XE



**NEW
2023**

HOMOLOGATED
ECE 22-06

	XS	S	M	L	XL
CONCEPT-XE SPEEDBLOCK Matt Black / White	8007831001	8007831002	8007831003	8007831004	8007831005

749,95€



**NEW
2023**

HOMOLOGATED
ECE 22-06

	XS	S	M	L	XL
CONCEPT-XE SPEEDBLOCK Matt Black / Red	8007831007	8007831008	8007831009	8007831010	8007831011

749,95€



**NEW
2023**

HOMOLOGATED
ECE 22-06

	XS	S	M	L	XL
CONCEPT-XE BACKER Green / White	8007832001	8007832002	8007832003	8007832004	8007832005

749,95€

Full Face helmets



CONCEPT-XE



**NEW
2023**

**HOMOLOGATED
ECE 22-06**

	XS	S	M	L	XL
CONCEPT-XE BACKER Black / White	8007832007	8007832008	8007832009	8007832010	8007832011

749,95€



**NEW
2023**

**HOMOLOGATED
ECE 22-06**

	XS	S	M	L	XL
CONCEPT-XE Frost Black	8007828001	8007828002	8007828003	8007828004	8007828005

649,95€



**NEW
2023**

**HOMOLOGATED
ECE 22-06**

	XS	S	M	L	XL
CONCEPT-XE Modern Grey	8007828007	8007828008	8007828009	8007828010	8007828011

649,95€

■ Full Face helmets

TOUR-X4



Full Face helmets

Versatile options

Your choice: wear the Tour-X 4 with or without peak, with or without visor and combinations of these two. The large visor opening offers plenty of room for motocross-style goggles when riding without the visor.

PINLOCK
SYSTEME ANTIBUÉE



Outer shell : SFL

Super Fibre Laminate, this is the basic Arai outer shell, which provides more strength than other shell materials, yet is still lightweight.



Facial Contour System

To offer an even better snug fit and enhancing the comfort to the lower jaw, the Facial Contour System (FCS) works with a foam spring support in the cheek pad that compresses and rebounds.



Replaceable interior

Completely removable interiors that may be cleaned with mild soap and lukewarm water. Different size thicknesses are available to fit those in-between sizes for a custom fit for every rider.



Be ready for adventure!

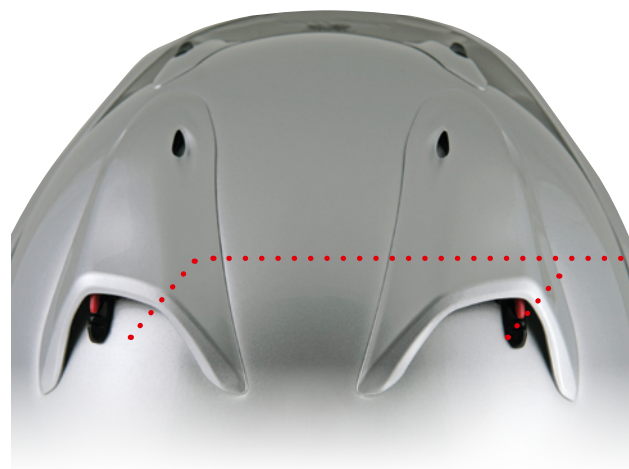
Peel Away pads

5mm thick removable foam layer on the ear cups/cheek pads and temple pads. Offering more room if desired without the need to purchase an optional headliner or new pads/ear cups.



Emergency Release System

Allows easier access to an injured rider. By pulling the orange tabs integrated in the pads, the cheek pads slide out. Making helmet removal easier for trained medical personnel and rescuers and minimising the risk of additional injury.



Innovative peak

The Arai peak scavenges and forces air into the forehead vent ports for cooling while at the same time using multiple relief-ports to reduce "lifting" at higher speeds.



Ventilation

Air Conductor rear vent offers higher vacuum for enhanced ventilation. Three-position chin vent (including demist function), lower side vents and build-in neck exhaust increases the flow of fresh air inside the helmet. Unique visor vents guide fresh air to the forehead area without the need for holes in the outer shell and impact absorbing liner.



Full Face helmets



TOUR-X4



	XS	S	M	L	XL	2XL
TOUR-X4 BREAK White / Blue / Red	8005000001	8005000002	8005000003	8005000004	8005000005	8005000006

849,95€

The new Tour-X 4 must be one of the most versatile helmets ever: adventure, grand touring or off road, no matter the riding conditions, the Tour-X 4 is ready for it.

- Outer shell SFL (Super Fibre Laminate) This is the basic Arai outer shell. Super fibre provides more comfort than other shell materials, yet is still strong and lightweight.
- Replaceable interior Complete removable interiors that may be cleaned with mild soap and lukewarm water, rinse well and let it dry for a day, never in direct sunlight or near a stove. Different size thicknesses are available to fit those in-between sizes for a custom fit for every rider.
- Facial Contour System To offer an even better snug fit and enhancing the comfort to the lower jaw, the Facial Contour System (FCS) works with a foam spring support in the cheek pad that compresses and rebounds
- 5mm "Peel Away" 5mm thick removable foam layer on the ear cups/ cheek pads and temple pads. Offering more room if desired without the need to purchase an optional headliner or new pads/ear cups.
- Emergency Release System Allows easier access to an injured rider. By pulling the orange tabs integrated in the pads, the cheek pads slide out. Making helmet removal easier for trained medical personnel and rescuers. Minimising the risk of additional injury
- 5-year limited warranty

Since 1937, Arai is a family company, driven by the same family, with the same mission, through three generations of riders : build the best possible helmet. Every Arai helmet is inspected by different quality inspectors to ensure that the customer gets a perfect finished product. In every Arai shell you will find the signature of the craftsman who made it. You may never see it, but it is here! Their mission were always been the protection and comfort of riders, that's all!

Size chart

XS	53-54 cm
S	55-56 cm
M	57-58 cm
L	59-60 cm
XL	61-62 cm
XXL	63-64 cm



Full Face helmets



TOUR-X4



	XS	S	M	L	XL	2XL
TOUR-X4 BREAK Black / Orange / White	8005000007	8005000008	8005000009	8005000010	8005000011	8005000012

849,95€



**NEW
2023**

	XS	S	M	L	XL	2XL
TOUR-X4 VISION Grey / Blue	8007826001	8007826002	8007826003	8007826004	8007826005	8007826006

849,95€



**NEW
2023**

	XS	S	M	L	XL	2XL
TOUR-X4 VISION White / Orange / Black	8007826007	8007826008	8007826009	8007826010	8007826011	8007826012

849,95€

Full Face helmets



TOUR-X4



XS	S	M	L	XL	2XL
8004980001	8004980002	8004980003	8004980004	8004980005	8004980006

TOUR-X4 HONDA AFRICA TWIN'18
White / Red / Blue

879,95€



XS	S	M	L	XL	2XL
8004961001	8004961002	8004961003	8004961004	8004961005	8004961006

TOUR-X4 DEPART
Red / White / Black

849,95€

NEW
2023



XS	S	M	L	XL	2XL
8004961007	8004961008	8004961009	8004961010	8004961011	8004961012

TOUR-X4 DEPART
Blue / Red / White / Black

849,95€

NEW
2023

Full Face helmets



TOUR-X4

NEW
2023



	XS	S	M	L	XL	2XL
TOUR-X4 DEPART Gun Metallic / Black	8004961013	8004961014	8004961015	8004961016	8004961017	8004961018

849,95€



	XS	S	M	L	XL	2XL
TOUR-X4 COVER White / Grey / Black	8004967001	8004967002	8004967003	8004967004	8004967005	8004967006

849,95€



	XS	S	M	L	XL	2XL
TOUR-X4 COVER Blue / Grey / Black	8004967007	8004967008	8004967009	8004967010	8004967011	8004967012

849,95€

Full Face helmets



TOUR-X4



XS S M L XL 2XL

TOUR-X4 COVER
Neon Yellow / Grey / Black

8004967013 8004967014 8004967015 8004967016 8004967017 8004967018

849,95€



XS S M L XL 2XL

TOUR-X4 COVER UK

8004967019 8004967020 8004967021 8004967022 8004967023 8004967024

849,95€

**NEW
2023**



XS S M L XL 2XL

TOUR-X4 Diamond White

8004698001 8004698002 8004698003 8004698004 8004698005 8004698006

699,95€

Full Face helmets



TOUR-X4



**NEW
2023**

	XS	S	M	L	XL	2XL
TOUR-X4 Diamond Black	8007861001	8007861002	8007861003	8007861004	8007861005	8007861006

699,95€



	XS	S	M	L	XL	2XL
TOUR-X4 Frost Black	8006347001	8006347002	8006347003	8006347004	8006347005	8006347006

699,95€



**NEW
2023**

	XS	S	M	L	XL	2XL
TOUR-X4 ADVENTURE Grey	8007825001	8007825002	8007825003	8007825004	8007825005	8007825006

849,95€

■ Open Face helmets

SZ-R-VAS

©Javi Echevarria



Open Face helmets



SZ-R VAS



	XS	S	M	L	XL	2XL
SZ-R VAS NAKAGAMI	8007833001	8007833002	8007833003	8007833004	8007833005	8007833006

769,95€

The Arai Jet SZ is now equipped with the VAS system, which reduce the size of the side plates to offer smoother surface in the case of slipping during a fall. The most iconic of the high-end urban helmets takes the opportunity to adopt numerous internal modifications in order to preserve its status as king of the great boulevards, especially in France, the hunting ground of the Arai SZ-R VAS.

- Rounder and smoother shell
- Wider peripheral shell belt
- VAS articulation system
- FCS interior (Facial Contour System)
- Waterproof cheek pad
- Adjustable liner and foam thickness
- Removable and washable interior
- Adjustable foams for eyeglass wearers
- Screen change facilitated by the VAS system
- Improves stability and reduces pilot fatigue
- Same ventilation system as the RX-7V full-face helmet

Size chart

XS	53-54 cm
S	55-56 cm
M	57-58 cm
L	59-60 cm
XL	61-62 cm
XXL	63-64 cm

Diffuser system

New Type 12 diffusers are 20mm longer and straightened for improved aerodynamics, working together with the Air Wing to improve stability. Compared to the previous Type 10 diffusers, the efficiency of the intake scoops of the new Type 12 diffusers has increased by 19%. The new air intake vents not only have more adjustability with three positions; closed, half open and fully open but also help to improve sealing that decreases wind noise and water intrusion.



Antimicrobial Liner material

The fully removable interior liner system has been improved with new Anti-microbial Liner material, which helps maintain neutral acidity levels close to human skin and antibacterial consumption. With the aim of a softer, deeper and even more comfortable fit we developed a new softer liner frame material. The new liner also has adjustable temple padding that allows for a customized fit.



Pro Shade System (optional)

Arai answer to the problem of sun glare and visor fogging. The VAS-V MV PSS offers an efficient combination of an easy to flip up, lockable sun peak, the VAS-V Max Vision visor and Pinlock inlay lens. PSS do not effect the integrity and strength of the helmet shell which could be caused by build-in sun visors.



Open Face helmets



SZ-R VAS



XS S M L XL 2XL

SZ-R VAS ORIENTAL 2 8001723001 8001723002 8001723003 8001723004 8001723005 8001723006

769,95€



XS S M L XL 2XL

SZ-R VAS MIMETIC 8001900001 8001900002 8001900003 8001900004 8001900005 8001900006
Black / Grey / Neon Yellow

769,95€



XS S M L XL 2XL

SZ-R VAS PEDROSA SPIRIT GOLD 8001902001 8001902002 8001902003 8001902004 8001902005 8001902006
Black / Gold

769,95€

Open Face helmets



SZ-R VAS



	XS	S	M	L	XL	2XL
SZ-R VAS RSW White / Red / Black	8000441001	8000441005	8000441006	8000441007	8000441008	8000441009

769,95€



	XS	S	M	L	XL	2XL
SZ-R VAS RSW Black / Grey / White	8000441010	8000441011	8000441012	8000441002	8000441003	8000441004

769,95€



	XS	S	M	L	XL	2XL
SZ-R VAS Gun Metallic	8001525001	8001525002	8001525003	8001525004	8001525005	8001525006

669,95€

Open Face helmets



SZ-R VAS



XS S M L XL 2XL

SZ-R VAS Matt Blue

8000442001

8000442005

8000442006

8000442007

8000442008

8000442009

669,95€



XS S M L XL 2XL

SZ-R VAS Matt Green

8000442010

8000442011

8000442012

8000442002

8000442003

8000442004

669,95€



XS S M L XL 2XL

SZ-R VAS Diamond White

8001138001

8001138005

8001138006

8001138007

8001138008

8001138009

669,95€

Open Face helmets



SZ-R VAS



	XS	S	M	L	XL	2XL
SZ-R VAS Diamond Black	8001138010	8001138011	8001138012	8001138002	8001138003	8001138004

669,95€



	XS	S	M	L	XL	2XL
SZ-R VAS Frost White	8001234001	8001234005	8001234006	8001234007	8001234008	8001234009

669,95€



	XS	S	M	L	XL	2XL
SZ-R VAS Frost Black	8001234010	8001234011	8001234012	8001234002	8001234003	8001234004

669,95€

Open Face helmets



SZ-R VAS



XS S M L XL 2XL

SZ-R VAS Modern Grey

8001425001

8001425002

8001425003

8001425004

8001425005

8001425006

669,95€

©Javi Echevarría





OUR UNIQUE | **OBSESSION** | WITH PROTECTION

THE CONSISTENT PURSUIT OF GAINS IN PROTECTION

■ Off-road helmets

MX-V



© ARAI

Off-road helmets

Outer shell : ScLc

(Super complex Laminate construction)

30% stronger than standard fibre glass in extension and bending resistance. Two outer layers of Super Fibre, one middle layer of special fibre. The middle layer consists of a very special material, a very strong and light chemical fibre exclusive to Arai.



Mouth vent

Mounted from the outside to further improve penetration resistance. The one-piece, stainless steel mesh screen provides a durable barrier against roost while minimizing mud packing. The removable screen is easy to clean.



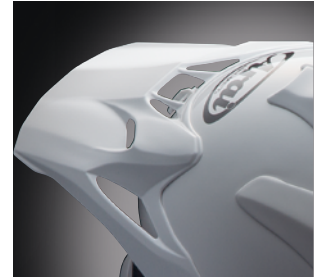
Dry-Cool® liner

The completely removable and washable Dry-Cool® interior comfort lining is developed for and tested in MotoGP. It uses micro water cells to improve moisture and heat transfer from the head to the airflow and dries much faster than conventional textiles. Keeps your head cooler and dryer during a long ride.



Innovative peak

The Arai peak scavenges and forces air into the forehead vent ports for cooling while at the same time using multiple relief-ports to reduce "lifting" at higher speeds.



Stronger shell advanced by the latest technologies

From extreme ventilation to unmatched comfort, among numerous other advances you expect in our MX-V model.

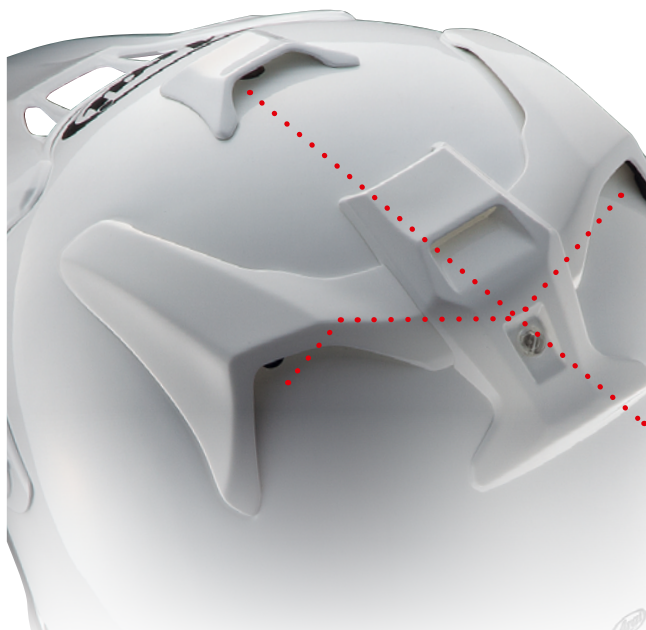
Dirt removal

The elongated and rounded peak helps protect the rider from mud or other objects. The flow-through vent ducts and removable rear vent cowls also allow you to remove dirt easily.



Facial Contour System (FCS)

To offer an even better snug fit and enhancing the comfort to the lower jaw, the Facial Contour System (FCS) works with a foam spring support in the cheek pad that compresses and rebounds



Goggle band guidance

The eye-opening side trim and ridged vent ducts design allow the goggle band to sit firmly even during hard riding.



Ventilation

Easy to clean diffusers create a strong venturi vacuum at the rear. Centre top vent for increased airflow. Under-peak air intake collects and directs cool air into the helmet. Inner chin vent shutter prevents debris coming into the helmet in dusty riding conditions. Goggle ventilation and lower side vents.

Off-road helmets



MX-V

NEW
2023



	XS	S	M	L	XL	2XL
MX-V STARS & STRIPES White / Red / Blue / Neon Yellow	8007827007	8007827008	8007827009	8007827010	8007827011	8007827012

699,95€

Years of experience can be found in this ultimate off road helmet. The perfect choice for MX, enduro and off road use.

- Outer shell: cLc (complex Laminate construction) Contains a specially designed composite fibre that is sandwiched between the two layers of Super Fiber Laminate. The composite fibre acts as a reinforcement layer without adding significantly to the weight of the helmet.
- Ventilation Easy to clean diffusers create a strong venturi vacuum at the rear. Centre top vent for increased airflow. Under-peak air intake collects and directs cool air into the helmet. Inner chin vent shutter prevents debris coming into the helmet in dusty riding conditions. Goggle ventilation and lower side vents.
- Dry-Cool® liner: the completely removable and washable Dry-Cool® interior lining is developed for and tested in MotoGP. It uses micro water cells to improve moisture and heat transfer from the head to the airflow and dries much faster than conventional textiles. Keeps your head cooler and dryer during a long ride.

- Facial Contour System (FCS): to offer an even better snug fit and enhancing the comfort to the lower jaw, the Facial Contour System (FCS) works with a foam spring support in the cheek pad that compresses and rebounds.
- Goggle band guidance The eye-opening side trim and ridged vent ducts design allow the goggle band to sit firmly even during hard riding
- 5-year limited warranty

Size chart

XS	53-54 cm
S	55-56 cm
M	57-58 cm
L	59-60 cm
XL	61-62 cm
XXL	63-64 cm



Off-road helmets



MX-V

**NEW
2023**



	XS	S	M	L	XL	2XL
MX-V STARS & STRIPES Orange / Blue / Black	8007827001	8007827002	8007827003	8007827004	8007827005	8007827006

699,95€

**NEW
2023**



	XS	S	M	L	XL	2XL
MX-V BLOCK Black / White / Grey	8006499005	8006499003	8006499002	8006499001	8006499004	8006499006

699,95€

**NEW
2023**



	XS	S	M	L	XL	2XL
MX-V BLOCK Pink / Neon Yellow / Blue	8006499007	8006499008	8006499009	8006499010	8006499011	8006499012

699,95€

Off-road helmets



MX-V



	XS	S	M	L	XL	2XL
MX-V White	8004687001	8004687002	8004687003	8004687004	8004687005	8004687006

569,95€



	XS	S	M	L	XL	2XL
MX-V Frost Black	8006344006	8006344001	8006344002	8006344003	8006344004	8006344005

569,95€



Adrien Van Beveren
Morocco Rally 2022
Team Honda HRC Monster Energy

©HONDA HRC - Monster Energy

Suggested retail prices, all taxes included - updated online on

Spare parts

Shields and compatible helmets mapping table



All Arai spare parts are available on:
mybih.com



■ Spare parts



VAS-V SHIELD

VAS-V MAXVISION



Clear 8003117002



Light Smoke 8003117001



Tint 8003117003

VAS-V 2D



Clear 8003116001

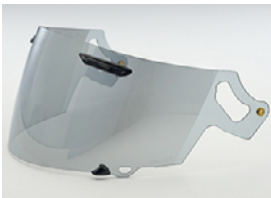


Light Smoke 8003116003

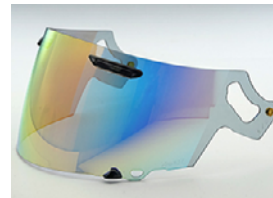


Tint 8003116002

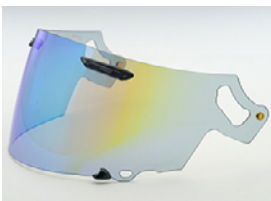
VAS-V MAXVISION IRIDIUM



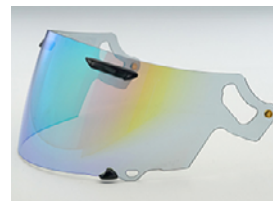
Iridium Silver 8007850001



Iridium Orange/Red 8007850002



Iridium Blue 8007850003



Iridium Green 8007850004

VAS-V DUAL



Clear 8003118001



Light Smoke 8003118002

■ Spare parts



PRO SHADE SYSTEM VAS-V Shields

PRO SHADE SYSTEM VAS-V



Clear 8003097001

PRO SHADE SYSTEM VAS-V READY



Clear 8003098001

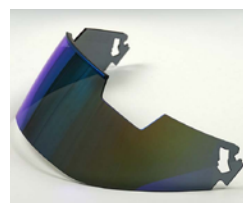
PRO SHADE SYSTEM VAS-V



Tint 8003097002



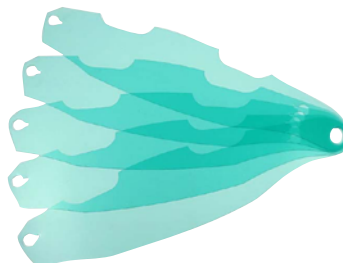
Iridium Silver 8003097003



Iridium Blue 8003097004

Tear-Offs VAS-V

x 5 Pcs.



8002256

■ Spare parts

SAI Shields

SAI MAXVISION



Clear 8003107001

SAI



Clear 8003103001



Light Smoke 8003103003



Tint 8003103002

SAI LRS 2D



Clear 8003106001

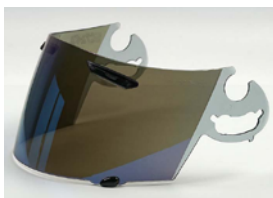


Light Smoke 8003106003



Tint 8003106002

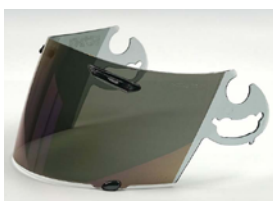
SAI IRIDIUM



Iridium Blue 8003105003



Iridium Silver 8003105002



Iridium Gold 8003105001



Iridium Purple 8003105004

Spare parts

SAI & SAI PRO SHADE SYSTEM Shields

SAI DUAL



Clear 8003104001



Light Smoke 8003104002

PRO SHADE SYSTEM SAI



Clear 8003089001

PRO SHADE SYSTEM SAI READY

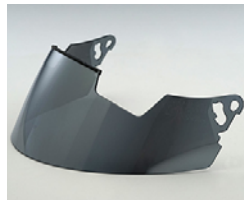


Clear 8003096001

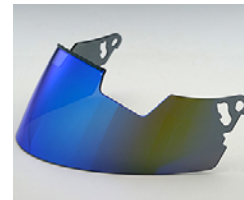
PRO SHADE SYSTEM SAI



Tint 8003095001



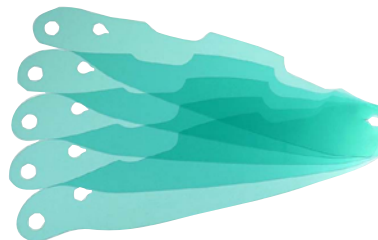
Iridium Silver 8003093001



Iridium Blue 8003093002

Tear-Offs SAI

x 5 Pcs.



8002258

Spare parts

SAL Shields

SAL



Clear 8003108001



Light Smoke 8003108003



Tint 8003108002

SAL 2D



Clear 8003090001



Light Smoke 8003090003

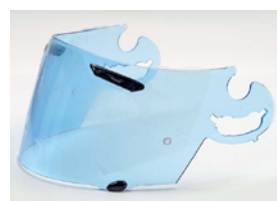


Tint 8003090002

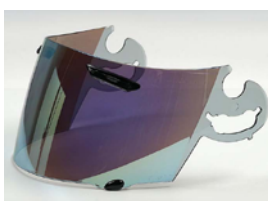
SAL IRIDIUM



Iridium Amber 8003108004



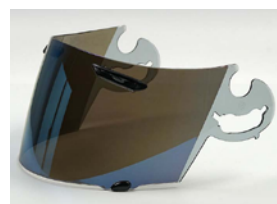
Iridium Blue 8003108005



Iridium Gold 8003109001



Iridium Silver 8003109002



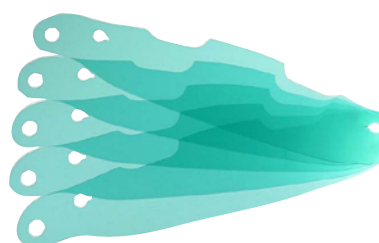
Iridium Blue 8003109003



Iridium Purple 8003109004

Tear-Offs SAL

x 5 Pcs.



8002258

Spare parts



VAS-Z Shields

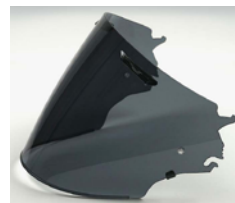
VAS-Z



Clear 8003120001



Light Smoke 8003120002

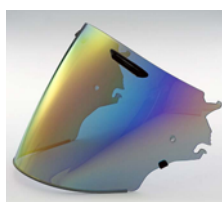


Tint 8003120003

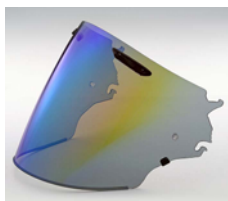
VAS-Z



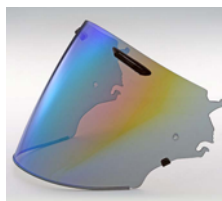
Iridium Silver Semi Smoke 8003121001



Iridium Red Semi Smoke 8003121002



Iridium Blue Semi Smoke 8003121003



Iridium Green Semi Smoke 8003121004

VAS-Z PRO SHADE SYSTEM Shields

PRO SHADE SYSTEM VAS-Z



Tint 8002819004



Diamond White 8002822001



Diamond Black 8002822002



Frost Black 8002825001



White 8002819002



Black 8002819003

■ Spare parts

VAS-Z PRO SHADE SYSTEM Shields

PRO SHADE SYSTEM VAS-Z



Gun
Metallic Frost 8002819001



Modern Grey 8002826001



Frost White 8002825002



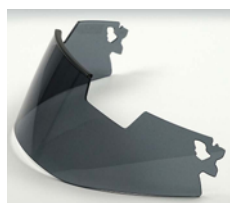
Mat Green 8005144001

PRO SHADE SYSTEM VAS-Z READY



Clear 8003099001

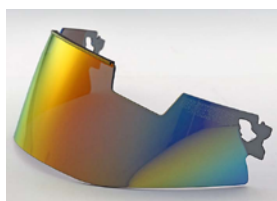
PRO SHADE SYSTEM VAS-Z XL



Tint 8003100001



Iridium Silver 8003101001



Iridium Orange/Red 8003101002



Iridium Blue 8003101003

■ Spare parts



SAZR Shields

SAZR



Clear 8003122001

SAZR LRS



Light Smoke 8003092002

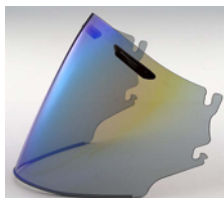


Tint 8003092001

SAZR



Iridium Silver 8003124001



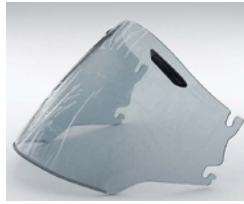
Iridium Blue 8003124002

Shields

SAMZ



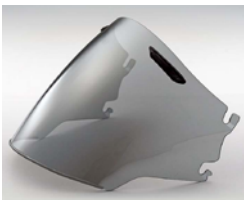
Clear 8003110001



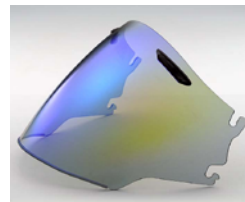
Light Smoke 8003110003



Tint 8003110002



Iridium Silver 8003111001



Iridium Blue 8003111002

CT-M



Clear 8003079001



Light Smoke 8003079003



Tint 8003079002

TOUR-X4



Clear 8003115001



Light Smoke 8003115003



Tint 8003115002

Anti-fog lens

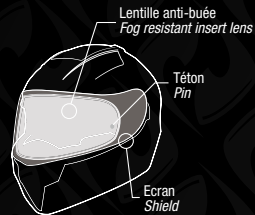


PINLOCK®

Pinlock offers a fantastic solution against shield fogging. Fogging can easily occur because of the difference in temperature inside and outside your helmet and your moist breath.

- Pinlock Original insert is made of a moisture absorbing plastic : surface basically dry when used
- Pinlock insert has a silicone seal : creates a double shield system
- Air-tight pocket ensures that the difference in temperature becomes significantly lowered
- Pinlock insert absorbs moisture on the inside and offers you continuous clear visibility

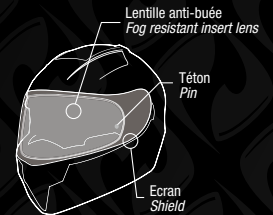
LENS COLOR



CLEAR

This insert offers you clear and fog free vision under normal weather conditions

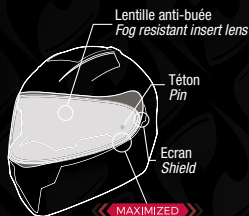
LENS COLOR



LIGHT SMOKE

This lightly tinted insert offers you comfortable vision under partially cloudy skies conditions

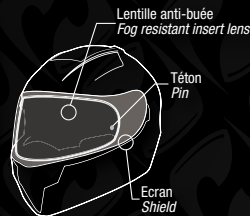
MAX VISION



100% MAX VISION

- Maximum field of view
- The lens is fully integrated inside the shield
- No false light leakage

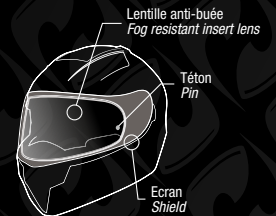
LENS COLOR



DARK SMOKE

This dark tinted insert provides excellent protection against the most brilliant of sunshine

PROTECTINT



ProtectINT™

This photochromic insert tints under the effect of UV lights. As the UV light becomes stronger, the insert will tint darker.

Anti-fog lens for Arai helmets



For SAL Visors



For SAI Visors



Maxvision for SAL Visors



Maxvision for VAS Visors



CTF Visors



Tour-X Visors



Pinlock lenses for MAXVISION VAS-V visor	PROTECTINT	8004586001
Pinlock lenses for MAXVISION VAS-V visor	Clear	8004585001
Pinlock lenses for VAS-Z visor	PROTECTINT	8000023
Pinlock lenses for VAS-Z visor	Clear	8004580001
Pinlock lenses for TOUR-X visor	PROTECTINT	8000024
Pinlock lenses for TOUR-X visor	Tinted	8006016
Pinlock lenses for TOUR-X visor	Light Smoked	8005401
Pinlock lenses for TOUR-X visor	Yellow	8005372
Pinlock lenses for CT-F visor	PROTECTINT	8000022
Pinlock lenses for CT-F visor	Light Smoked	8005349
Pinlock lenses for CT-F visor	Tinted	8005371
Pinlock lenses for CT-F visor	Yellow	8005348
Pinlock lenses for MAXVISION SAI visor	Clear	8004584001
Pinlock lenses for MAXVISION SAI visor	Tinted	8004584002
Pinlock lenses for MAXVISION SAI visor	Light Smoked	8004584003
Pinlock lenses for SAL visor	Clear	8004581003
Pinlock lenses for SAL visor	Tinted	8004581001
Pinlock lenses for SAL visor	Light Smoked	8004581002

The passion for adventure. The obsession with perfection.

We believe that there is no shortcut in the pursuit of a passion. At Sena, we're all bikers and tech enthusiasts. So when we develop new products, we go to great lengths to make sure the final product is everything we dreamed of... and everything our customers need.

At the same time, we expect to shatter preconceptions and challenge conventional boundaries, especially when accompanied by the word "impossible". We lay our visions on the table to be critiqued and reshaped before experimenting and refining every technical detail, design decision and material until perfect.

We test our ideas to see if they live up to our own sense of adventure... and revise them again. Finally, we brand them with the Sena name, which represents our validation to their ability to experience the adventures that our customers dream of, adventures that we will help them create and improve.

This is the Sena method. And it has been since 1998. Our passion for adventure and our obsession with perfection fuel us... and we hope they translate into products that inspire our customers to challenge the limits of their ordinary routines and to pursue the adventures of their lives.

Sena. Evolve the adventure.



Exclusive Arai intercoms.

These products are suitable for the Arai Quantic, RX-7V and RX-7V EVO helmets.

BIHR is designated as the exclusive distributor of suitable SENA intercoms to Arai helmets.



ACS10

SENA Intercoms for the Arai Quantic, RX-7V and RX-7V EVO helmets.











199,95€

SENA Intercoms ACS10

800 7313

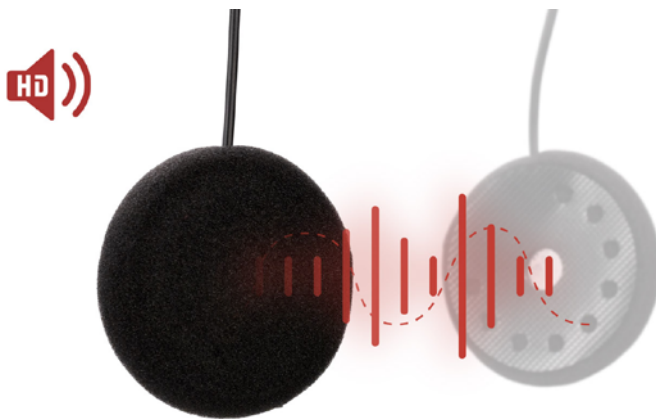


Product specification

-  HD speakers
-  Four-way intercom
-  HD Intercom
-  Intercom 1.6KM /1.0MI
-  Bluetooth 4.1
-  Smartphone app
-  Smart intercom pairing
-  Multi-language voice prompts
-  Advanced noise control™
-  Firmware upgradable

SENA COMMUNICATION FOR THE ARAI QUANTIC, RX-7V AND RX-7V EVO HELMETS

The Sena ACS10 is a Bluetooth communication system designed specifically for the Arai Quantic, RX-7V and RX-7V EVO motorcycle helmets. The discrete ACS10 consists of HD speakers, a microphone, a three-button control and a battery, which are easy to install. The ACS10 has been designed to fit perfectly inside these 3 Arai models, providing ultimate performance.



HD SOUND FOR YOUR OUTINGS

The ACS10 offers high quality sound thanks to the remarkable HD speakers from Sena. HD speakers deliver a noticeable boost in bass and audio clarity for music, intercom conversations, phone calls and more. In addition to HD speakers, the ACS10 also features Sena's Advanced Noise Control™ technology, which filters out wind and white noise to deliver crystal-clear sound.

BLUETOOTH INTERCOM + AUDIO MULTITASKING™

The ACS10 enables 4-way Bluetooth communication over a range of up to 1 mile. Riders can also pair their smartphone to receive GPS directions, listen to music or even take a call... all this from their Arai helmet (Quantic, RX-7V or RX-7V EVO)! The ACS10 features Sena's Audio Multitasking™ technology which allows riders to have an intercom conversation while simultaneously listening to music, FM radio or GPS.



STAY CONNECTED WITH THE SENA UTILITY APP

Pair the ACS10 with the Sena Utility app to control many of the device's functions at your fingertips. Users can configure device settings and access the quick start guide from the comfort of their smartphone.



Exclusive Arai intercoms.
 ACS-RAM is suitable for ARAI SZ-R VAS helmets.
 BIHR is designated as the exclusive distributor of suitable SENNA intercoms to Arai helmets.



ACS-RAM






**SENA Intercoms ACS-RAM
 for Arai SZ-R VAS helmets**

199,00 €

SENA Intercoms ACS-RAM

800 7730

Product specification

-  Two-way intercom
-  HD Intercom
-  Intercom range 500m
-  Smartphone app
-  Smart intercom pairing
-  Firmware upgradable
-  Multi-language voice prompts
-  Custom helmet fit





COMMUNICATION BUILT FOR THE ARAI SZ-R VAS

The ACS-RAM is a Bluetooth communication system by Sena that was designed specifically for the Arai SZ-R VAS open-face helmet. The compact communication system offers 2-way Bluetooth intercom and smartphone connectivity for listening to music, turn-by-turn GPS, taking phone calls and more.



DESIGNED TO FIT :



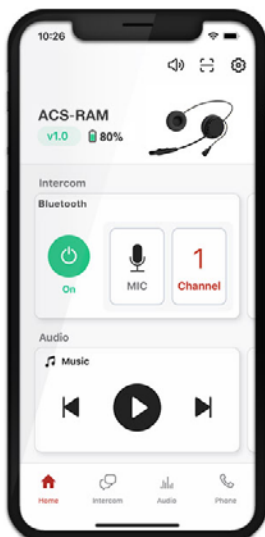
(SZR VAS HELMETS)

CUSTOM FIT FOR THE ARAI SZ-R VAS

The ACS-RAM fits perfectly into the interior recesses of the Arai SR-Z VAS open-face helmet. The ACS-RAM's speakers and microphone are easily installed into the helmet allowing for incoming and outgoing audio while riding. The compact design of the ACS-RAM allows for the device to barely be detected from the exterior of the helmet once installed.

2-WAY BLUETOOTH INTERCOM

The ACS-RAM supports 2-way Bluetooth communication at a range up to 500 meters (0.3 miles). The ACS-RAM features a 3-button control that lets users easily operate the functions of the headset while riding. The ACS-RAM is fully charged in 2.5 hours and offers a talk time of up to 12 hours.



SENA MOTORCYCLES APP

Link the ACS-RAM with the Sena Motorcycles app to control many of the device's functions from your fingertips. Riders can configure device settings and access the quick start guide from the convenience of their smartphone.





BIHR 2022 - EN

